

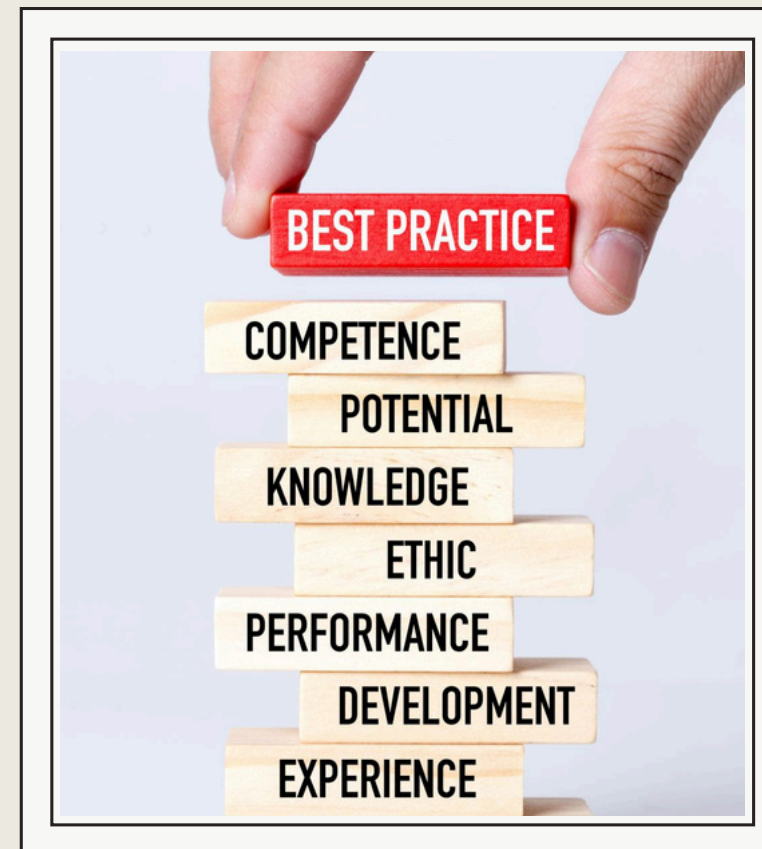
RECONNECT MINDS MALAYSIA SYNERGY

COMPANY PROFILE



SHAPING FUTURE, ONE BUSINESS
AT A TIME

+ @RECONNECT MINDS



ABOUT US



Reconnect Minds Malaysia is a dynamic collective of **ICF and HRDC - certified, Heartmath Coherence coaches and trainers**, each specialised in their unique area of expertise.

Together, we committed to empowering individuals and organizations through transformative programs that integrate **cognitive mastery, emotional intelligence, and holistic well-being.**

By combining time-tested principles with modern methodologies, we provide a bridge to conscious living, enabling individuals and organizations to reconnect with their authentic selves and realize their fullest potential.

Our approach fosters personal **growth, resilience,** and a **deeper understanding** of the mind-body connection, driving **meaningful and lasting transformation.**

OUR VISION & MISSION

RECONNECT MINDS
MALAYSIA SYNERGY



OUR VISION

To create a thriving global community of businesses that lead with purpose, innovate with intention, and build a sustainable future for generations to come.

OUR MISSION

To partner with businesses in sparking purpose-driven innovation, aligning vision with transformative strategies that foster sustainable growth and meaningful impact.



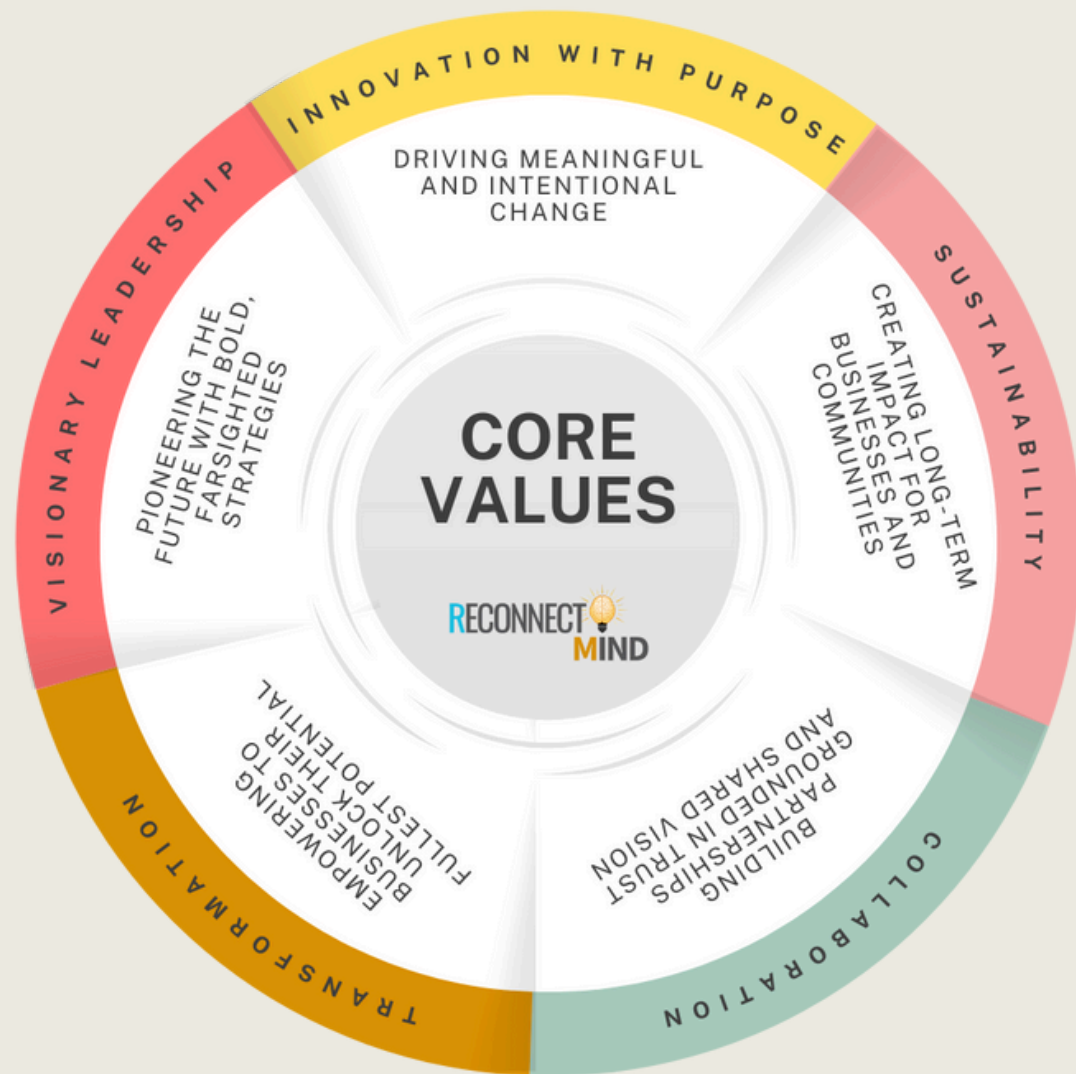
Our **vision and mission** are deeply aligned with growth and transformation, guiding individuals and organizations toward unlocking their fullest potential.

We believe that every person possesses an **inherent genius** and **wisdom** that, when nurtured, can lead to extraordinary personal and professional evolution.

This belief drives us to create environments that foster self-discovery, encourage continuous learning, and provide the tools and support necessary for individuals to tap into their inner brilliance.

By cultivating this innate wisdom, we empower people to transcend limitations, embrace their **authentic selves**, and **create meaningful, lasting change** in their lives and the world around them.

OUR CORE VALUES



Our **core values** are the foundation that drives us in entrepreneurship, leadership, and life.

They guide our decisions, ensuring we build businesses that are **ethical** and **impactful**. In leadership, our values shape how we **inspire** and **empower** others, fostering trust and collaboration.

In life, they serve as a compass, helping us stay aligned with our true selves and navigate challenges with integrity. These values also influence the relationships we build and the impact we have on the world.

By staying true to them, we foster **alignment**, **authenticity**, and **fulfillment**, creating a **meaningful legacy** that reflects our highest potential and resonates with deeper purpose.

OUR GOLDEN RULES



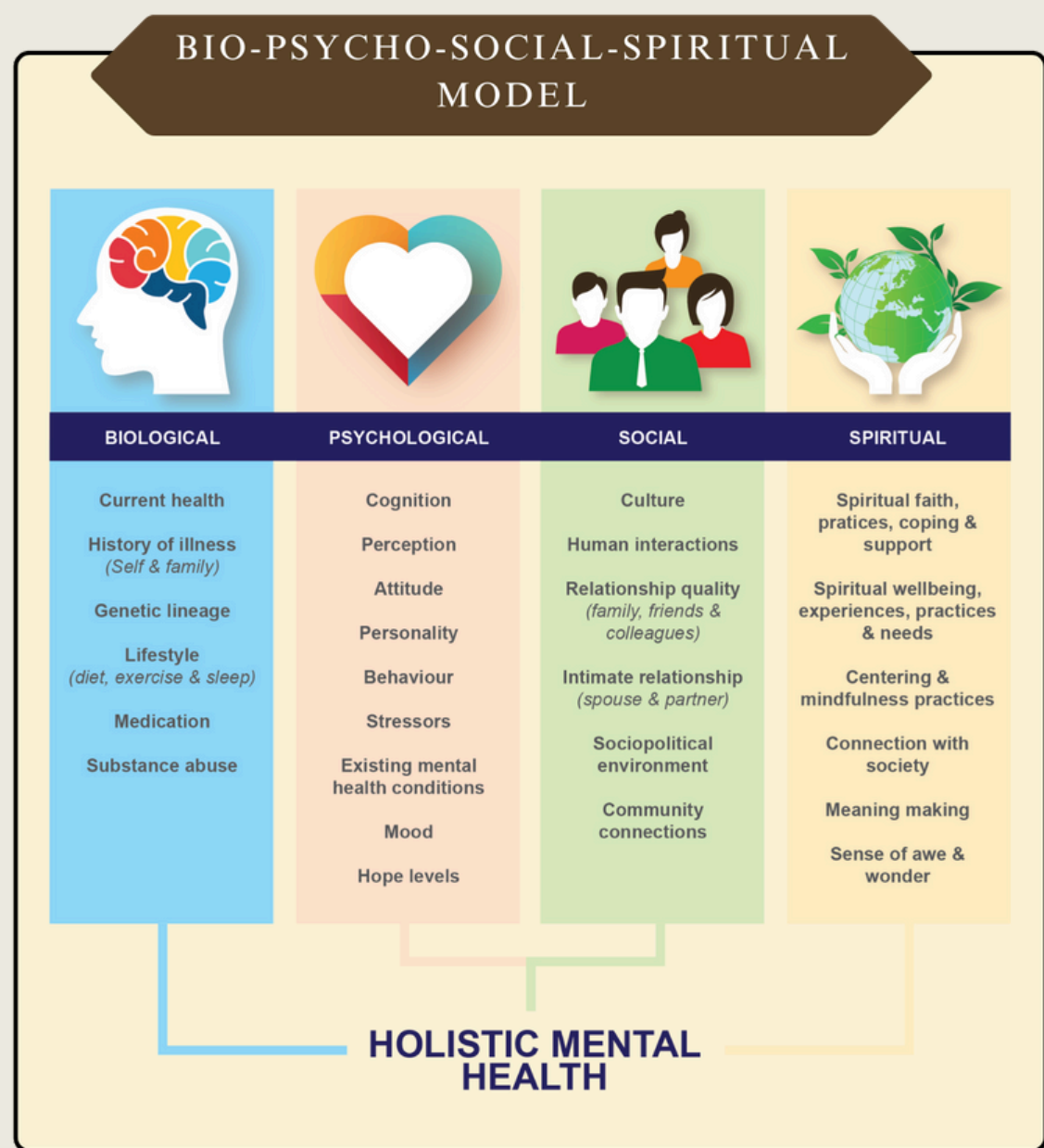
Our **golden rules** in running our own business and leadership serve as an inner compass, guiding our decisions, actions, and intentions with purpose and integrity.

These principles emphasize mindfulness, ethical practices, and a deep awareness of how our leadership and business impact the world and the people within it.

By staying true to values such as **transparency**, **empathy**, and **sustainability**, we create businesses that **thrive** while contributing positively to society.

This inner compass helps us navigate challenges with **resilience**, ensuring our entrepreneurial and leadership journeys align with both personal **growth** and the **greater good**.

OUR COLLABORATION



ASTARA Consultancy: The Mind Clinic operates in Singapore and Malaysia, offering comprehensive and integrated mind health services. Founded by Dr. Shobna G. Shashi, a certified Clinical and Forensic Psychologist with over a decade of experience, ASTARA emphasizes a collaborative, cross-border approach to mental health services.

In partnership with Reconnect Minds, ASTARA pioneers the Bio-Psycho-Social-Spiritual (BPSS) Model in Malaysia.

This integrated framework considers biological, psychological, social, and spiritual factors, enabling tailored treatment plans that address clients' unique needs. By applying the BPSS Model, ASTARA aims to revolutionize mental healthcare in Malaysia through a holistic and client-centered approach.

Our Workshops & Training

01

ENTREPRENEURS:

IGNITE YOUR VISION, CREATE WITH PURPOSE

02

MIND MASTERY:

HARNESSING THE POWER OF THE SILVA METHOD

03

CRAFTING CLARITY:

SELF-AWARENESS & CREATIVITY THROUGH WOODWORK

04

HEART INTELLIGENCE:

UNLOCKING INNER COHERENCE FOR TRANSFORMATIVE LIVING

05

YOUTH EMPOWERMENT CAMPS:

FUTURE LEADERS DEVELOPMENT



Our Corporate Programs

01 CONSCIOUS LEADERSHIP MASTERY:
LEADING WITH PURPOSE, CREATING WITH
CONSCIOUSNESS FOR SENIOR MANAGEMENT

02 INTELLIGENT LEADERSHIP MASTERY:
LEADING FROM THE EMOTIONAL INTELLIGENT FOR
ORGANISATIONAL GROWTH

03 UNIFIED VISION:
ALIGNING PERSONAL & ORGANIZATIONAL VISION,
MISSION & VALUES FOR STRATEGIC SUCCESS



Our One-on-One Coaching

01 **PATH TO TRANSFORMATION:**
UNLOCKING YOUR INNER WISDOM & TRUE POTENTIAL

02 **UNLOCKING YOUR LIFE'S CODE:**
DISCOVERING YOUR PURPOSE THROUGH GENE KEYS

03 **CONNECTED HEARTS:**
TRANSFORMATIVE COACHING FOR THRIVING
RELATIONSHIPS



Our Retreats

Our golden rules in running our own business and leadership serve as an inner compass, guiding our decisions, actions, and intentions with **purpose** and **integrity**.

These guiding principles emphasize mindfulness, ethical practices, and a deep awareness of how our leadership and business impact the world and the people within it.

By staying true to values such as transparency, empathy, and sustainability, we create businesses that thrive while contributing positively to society.

This inner compass helps us navigate challenges with resilience, ensuring our entrepreneurial and leadership journeys align with both personal growth and the greater good.



RECONNECT
MINDS



Our NatureConnect Series

01 **NATURECONNECT:**
CULTIVATING WELL-BEING THROUGH NATURE-INSPIRED
MINDFULNESS (1 DAY PROGRAM)

02 **NATURECONNECT:**
CULTIVATING YOUR INTUITION THROUGH NATURE'S
WISDOM (1 DAY PROGRAM)

03 **NATURECONNECT:**
NURTURING CHILDREN / YOUTH'S GROWTH THROUGH
OUTDOOR ACTIVITIES (2 DAYS PROGRAM)



INTEGRATED WITH

- SYLVOTHERAPY / FOREST THERAPY
- SOUND VIBRATIONAL THERAPY
- HEARTMATH COHERENCE BREATHWORK
- SILVA METHOD
- GENE KEYS
- DREAM ARC

Our Target Audiences



ENTREPRENEURS & VISIONARY LEADERS



CORPORATE TEAMS & EXECUTIVES



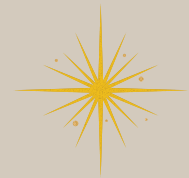
YOUTH & FUTURE LEADERS



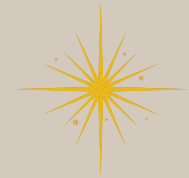
**INDIVIDUALS ON A PATH OF SELF-DISCOVERY,
GROWTH & PERSONAL DEVELOPMENT**



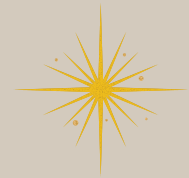
Our Uniqueness



AN INTEGRATED APPROACH THAT BRIDGES SCIENCE, PERSONAL DEVELOPMENT, AND HOLISTIC PRINCIPLES



EXPERTISE IN BLENDING TRANSFORMATIVE TOOLS SUCH AS THE SILVA METHOD, QUANTUM PRINCIPLES & PURPOSE-DRIVEN PRACTICES.



CUSTOMIZED PROGRAMS DESIGNED FOR PERSONAL, PROFESSIONAL & COMMUNITY GROWTH



A NURTURING & SUPPORTIVE ENVIRONMENT FOR INDIVIDUALS TO EXPLORE & REALIGN WITH THEIR COGNITIVE, EMOTIONAL & OPTIMAL POTENTIAL

Our Clients



Timberland

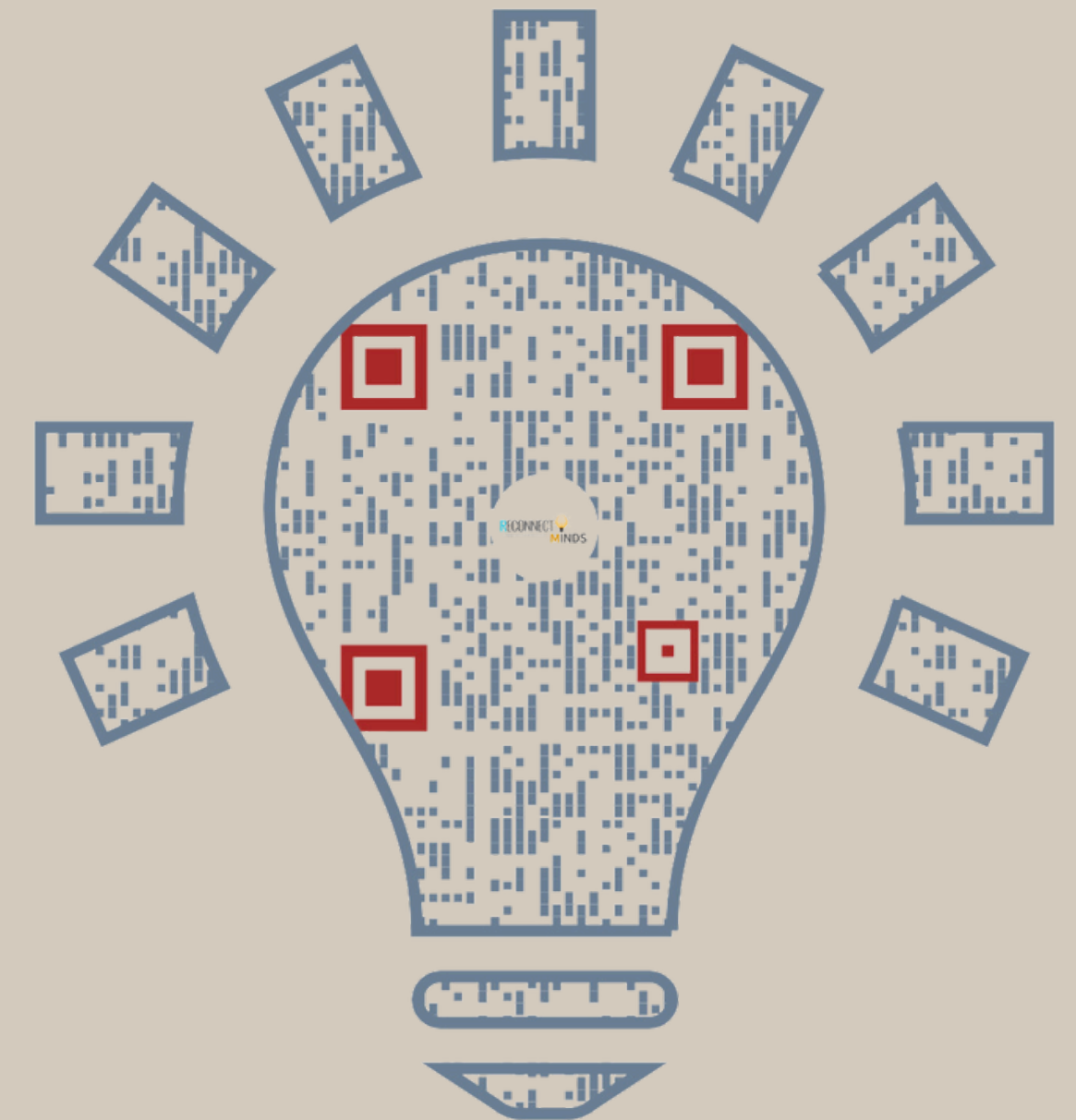


TheStar



CONTACT US

Empowering Minds
Inspiring Growth
Creating Impact



Reconnect Within
Evolve Beyond
Thrive Together

+60 111 670 3368 / +60 115 170 3368
info@reconnectminds.com


SCAN ME 

RECONNECT 
Shaping Futures, One Business at a Time **MINDS**